

 Absolute Dogs.

PRO DOG

PARTNER



TRAINING ACADEMY

AFFILIATE GUIDE

A PRO DOG TRAINERS COMPREHENSIVE GUIDE



 Absolute Dogs.

WHAT ARE THE GUIDELINES FOR AN AFFILIATE?

Note that for the purpose of this FAQ, the answer here is based on data relevant at the time of this being created. Expectations and privileges of the program may be adjusted at any time based on the conduct of our affiliates.

These rules and terms may be updated from time to time and absoluteDogs Ltd reserves the right to add to this as needed.

We put this together to unlock a new level of support for you, your students, and a way for you to quickly adapt to the changing world. We are all in this together and working as a team! This means there are a few affiliate rules.

Although you really do not need to, you can absolutely offer additional “bonuses” for signing up through you - e.g. regular coaching calls.

The amount of admin involved in cancelling and reactivating subscriptions should someone wish to benefit from these bonuses but (a) is already an existing member, or (b) have signed up using a different link means that we ask that you honour these bonuses should someone enquire about this regardless of whether they used your link or not - this is an abundance minded community.

We put this together to unlock a new level of support for you, your students, and a way for you to quickly adapt to the changing world.

Examples:

- Existing members cannot unsubscribe to then subscribe through your link, and we will be monitoring this.
- If an existing member is an in-person student of yours, then providing them with the bonuses you are offering to new sign ups is fair regardless of the fact they did not use your link. Providing extra value for students is never a bad thing - love your students, lots.

Unsubscribing to re-subscribe can be closely monitored and leads to increased admin and tech support, limiting our ability to offer the (unheard of) 50% within the affiliate programme - do not endanger this or your place as an affiliate is KEY.

AbsoluteDogs reserves the right to remove people from the affiliate programme (a) who do not adhere to the rules or (b) who stray outside of the ethos of the community or (c) who in any way act in a way that impacts the reputation of the parties involved.

WHEN Training Academy doors are OPEN, you may:

- advertise to your own students and audiences
- not advertise to absoluteDogs students, Facebook pages or any of our groups. This includes private messaging anyone via an AbsoluteDogs group to avoid people being spammed (the exception to this is if they are already an in-person student of yours.)

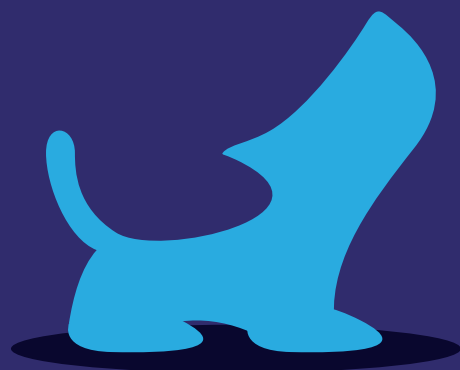
When Training Academy is CLOSED, you can provide the link to your clients, and students, but should not be actively marketing it on social media.

ADDITIONAL GUIDELINES

Additional Guidelines for clarification for all of you Gamechangers for when the Academy is **CLOSED**.

As an active PDT member who is a TA affiliate **I can:**

- Students who are currently learning with me or who have paused their learning but plan to re-start when able.
- IMPORTANT! If you are currently running a small group zoom class for example, inviting the class to Academy with your link would count as a personal invitation as it is happening "face-to-face" with your students and in a small closed setting.
- Previous students who you have developed a relationship with but training with you became impractical (e.g. moving out of area, work pattern prevents attending classes, do not currently offer anything for them).
- Family members, colleagues, or friends who you have a personal relationship with.
- Guard against your qualifying people posting or sending on your link in any form directly to their contacts. You must explain this link is for them only and that this is a personal invitation.



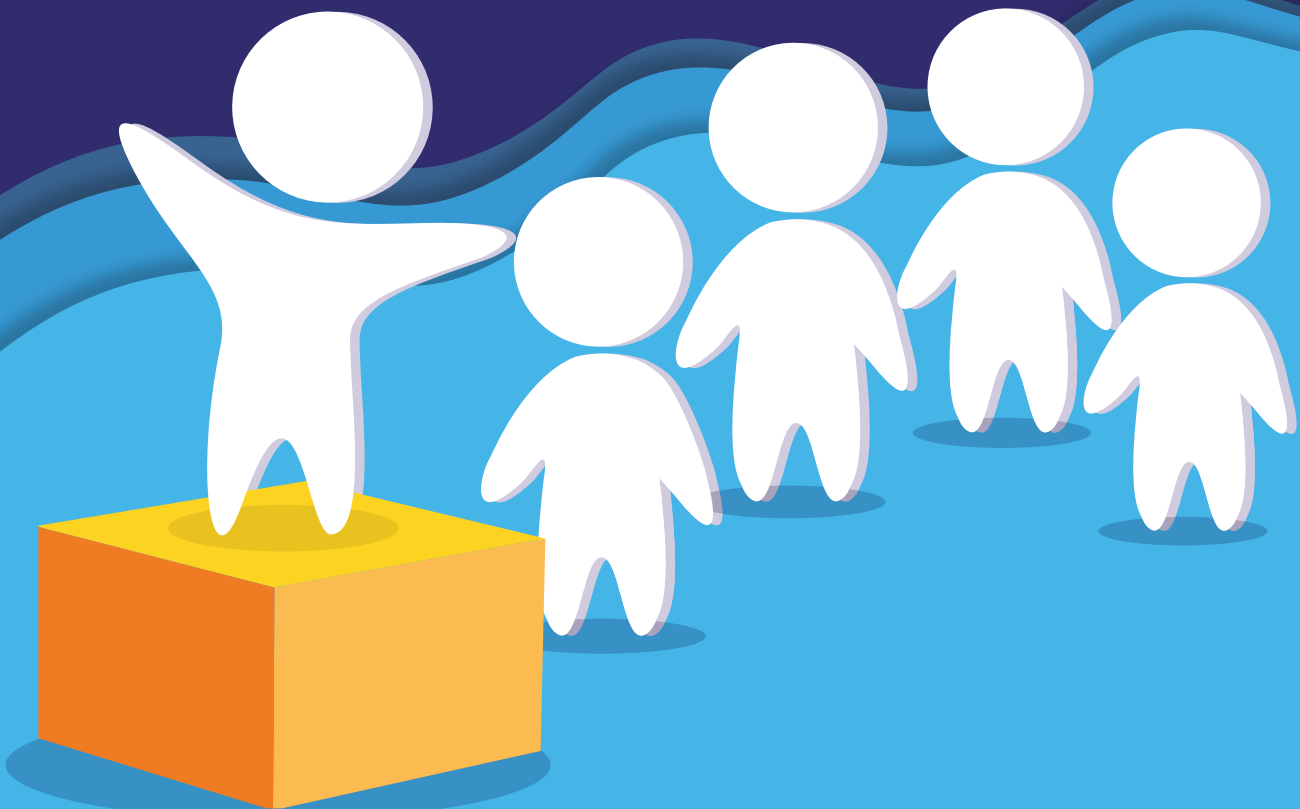
As an active PDT member who is a TA affiliate **I cannot:**

- Send individualized personal invites to ANYONE who is not a qualifying person.
- Post my link online as a public or private post anywhere outside of making an individualized personal invite to a qualifying person.
- This includes ALL social media (e.g. Facebook, Instagram, tiktok and all others), ALL bulk emails, ALL mailing lists whether "public" or "private/secret".
- This also includes WhatsApp and Messenger groups and all other similar platforms.
- Send my link to other PDT's to pass on to their students/friends/family/contacts.
- Approach anyone posting on any of the absoluteDogs groups and PM regarding either joining via my link or posting/passing on my link - even if they specifically ask for details of how to join the training academy. (If they are asking for details you can respond by suggesting that they contact ask@absolute-dogs.com)
- Post my link on my business website or any other website.
- Send my link in any bulk form additional to online, e.g. Snail Mail/Post, SMS/MMS, electronic calling systems etc....
- Ask anyone else to place my link on my behalf to anywhere that I would not be allowed to place myself.
- Ask any of my qualifying people to pass on my link in any form. If they know someone who would also like to join TA, they should pass on my general business details to enable me to develop a relationship prior to offering TA.

REMEMBER

Whoever you invite you will be taking full responsibility to “onboard”...

Regular contact with them in some form is going to be essential to provide this and it will take some level of commitment to fully support them. Further to this, there is a key benefit to staying in touch with them and supporting them - they stay as members for longer! We would recommend that you keep this at a manageable level for you to prevent the TA group being bombarded with requests for help during “CLOSED” periods.



MORE FOR YOU!

Check out this super LIVE with Tom and Lauren covering all of the details of being an affiliate!

Generating your **Affiliate Link!**

YOUR URL IS:

[https://shop.absolutedogstraining.c](https://shop.absolutedogstraining.com) [COPY URL](#)

Step 1. Copy this URL: <https://shop.absolutedogstraining.com/product/training-academy>
Step 2. Delete entirely what is in the URL generator below and paste in the above URL from
Step 3. Click "Generate URL"
Step 4. Copy the newly generated "REFERRAL URL"
Step 5. Paste it somewhere easily accessible for your own reference
Step 6. Share that URL with your students

The URL will end up looking something like this:
[https://shop.absolutedogstraining.com/product/training-academy/ref/\[your ID\]/](https://shop.absolutedogstraining.com/product/training-academy/ref/[your ID]/)

****Your link won't and doesn't need to have the open and closed square brackets []****

[Download your Training Academy Visuals Pack and Sample Emails Here](#)

We have outlined the steps you need to take to generate your link in the affiliate area that you can access by going to this link:

<https://shop.absolutedogstraining.com/affiliate-area/>

...EVEN MORE FOR YOU, WOW!

Here is to exciting times ahead and more
opportunity to thrive, not just survive!



As always if you have any questions or need further clarification please email
our amazing ask team (ask@absolute-dogs.com). or post your question in the
[Pro Dog Partner Affiliate Facebook Group](#)

Remember; it's important to get the correct info and the only way for that to happen
is to get it from the horse's mouth, so any questions at all, ping us an email or post in
the PDP Facebook Group rather than post a comment in the PDT Tribe group.

ask@absolute-dogs.com

Not only do you get 50% of your referral's membership dues for as long as your referrals are active members of TA...

We also make sure you get
**PROFESSIONALLY
MADE GRAPHICS**
and tried and true
EMAIL TEMPLATES
to get you going!





PRO DOG

PARTNER



absolute-dogs.com



facebook.com/absolutedogs/



instagram.com/absolutedogsofficial/